

FOR SALE

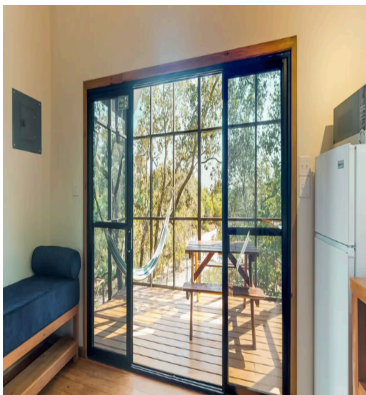
\$ 695,000.00 USD

Belize - Stann Creek District

Placencia

Listing ID: 100021546259

PRICE: USD\$695,000 Sitting in great location on unusually large 1.29 acre parcel on the Placencia Peninsula, 15 minutes to Placencia Village, 5 Minutes to Maya Beach, count your steps to the beach and sitting in the Jungle Canopy. Four Treehouse style cabanas embracing, Three – 1 bedroom plus loft cabanas, and One Main home tucked privately away with 2 bedrooms and each having a on-suite bath. Perfectly in tune with their surroundings, the Treehouse cabanas offer open concept design living, well equipped kitchen and screen in veranda for amazing outdoor wildlife experience. The main bedroom is private, roomy and ideal for long or short term stay. The lofts work as a additional guest space, viewing birds, reading or work space. When you catch your fresh catch of the day the treehouses have a common BBQ area with picnic seating area awaiting a relaxing evening in the trees. The main home is situated on the opposite end of the property, enabling privacy yet close enough you can manage the cabanas easily. It also sits high surrounded by the beautiful trees of the forest, it is a normal day for many species of bird



[SEE PROPERTY ON GOOGLE MAPS](#)



LAYLA AL-AJBA
Sales Agent
501 6202109
layla@1stchoicebelize.com
<https://1stchoicebelize.com/>



RE/MAX 1ST CHOICE

Main Street Placencia Village Stann Creek, Belize

Each office is independently owned and operated